



The Hub, located in Mountsorrel.

# The Hub: Tarmac's Operational Nerve Centre

Happy New Year from every one at Mountsorrel Quarry!  
By Joshua Mason...

**D**id you know that our operations centred around Mountsorrel are more than just the quarry? As well as our quarry staff and those based at Quorn House, we have about 150 team members based at what's known as the Hub. This is the operational nerve centre for our Midlands region. From co-ordinating logistics to managing delivery schedules, the Hub plays a vital role in enabling our operational sites across the region to deliver construction materials when and where they are needed across England. Joshua Mason takes a look behind the scenes.

## WHAT HAPPENS AT THE HUB?

The Hub houses a diverse range of teams, each playing a vital role in the quarry's operational success. Around 150 employees work here, and while most live locally, others commute from across the Midlands, including from Burton-on-Trent, Derby, and Nottingham.

Our operations are split into three main divisions. Aggregates and Asphalt Midlands sells and distributes aggregates and

asphalt, while Ready Mix Midlands looks after concrete production and distribution. Everything is overseen by our Central Functions team upstairs at the Hub – they manage accounts and support strategic operational planning, keeping our sites economically sustainable. Their work underpins the smooth running of every operation across the region.

**Step 1: Managing day-to-day operations at our sites**  
From the Hub, our teams manage the work going on not only here at Mountsorrel, but across all our sites in central England. From production schedules for the quarries, crushing rock for aggregate, supplying stone to make cement, our Hub teams are pivotal in making sure this all happens safely, efficiently and with minimum impact on the surrounding environment, to keep our customers supplied.

**Step 2: Setting the production schedules**  
To keep construction projects on track and keep the region's infrastructure safe, reliable and sustainable, we need to align our production schedules with customers' needs. Our teams liaise with builders working on projects large and small to make sure they've got what they need, when they need it.

**Step 3: Delivery**  
Creating our products is only half the battle. Distributing large quantities of building materials around the country to meet constantly shifting construction schedules is a major operation. Our teams work with contractors undertaking major infrastructure projects such as HS2 and motorways, and manage truck and rail schedules to make sure projects don't get held up because they're waiting on essential materials.

We recently supported the completion of the M69 road resurfacing project in the Leicestershire and Warwickshire, where we supplied all the asphalt for the work on junctions 2 to 21a. The project was completed in just four weeks!

## BEYOND OUR OPERATIONS

At The Hub we work across the region and nationally, but we also think local. We regularly support community initiatives because we are proud of our strong ties to the area. Our fundraising efforts have included bake sales for Macmillan Cancer Support and the annual Poppy Appeal. We have volunteered for local projects like the Mountsorrel Memorial Centre. We donate materials and free haulage for groups like Rothley Ivanhoe Tennis Club, enabling the repair of potholes in their car park and improving access for the community.

We are equally as passionate about inspiring the next generation. Last year, we welcomed schoolchildren from Woodbrook Vale School for work experience. Over the course of a week, they gained hands-on exposure to roles including price negotiations, distribution logistics, and even operating the weighbridge! We also have STEM ambassadors, who visit local schools to showcase career paths in construction and engineering. The aim is to spark curiosity and ambition in pupils, some of whom we hope one day might consider working with us!

We are always on the lookout for new initiatives to support so please contact us if you have any ideas.

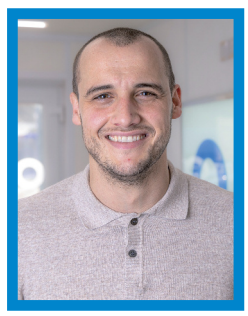
## A VITAL COG IN THE QUARRY'S MACHINE

Whether it's managing asphalt production, planning logistics, or supporting community initiatives, the Hub is central to our ability to deliver vital materials for Britain's infrastructure. We are really proud of the work we do here.

You can find out more about what goes on at Mountsorrel Quarry by visiting [Mountsorrel.tarmac.com](http://Mountsorrel.tarmac.com)

If you would like to contact the team, please email [mountsorrelquarryfeedback@tarmac.com](mailto:mountsorrelquarryfeedback@tarmac.com)

Joshua Mason,  
Senior Operations Manager.



A logistics meeting at the Hub.