

Welcome



Mountsorrel Quarry

Welcome, and thank you for attending. Today's drop-in session will give you the opportunity to learn more about our day-to-day operations and provide an update on our planning application for a northern and southeastern extension to Mountsorrel Quarry. Most importantly, you will be able to meet and speak with members of the Mountsorrel Quarry team, who are here today.

About Tarmac

Tarmac is the UK's leading supplier of construction materials, with over 150 years' worth of experience providing materials. Tarmac is part of CRH group, the leading producers of aggregates, asphalt, cement and concrete blocks in the UK. We are a major UK employer, with around 7,000 people working across more than 350 sites.

We provide vital building materials, such as stone, sand, gravel, concrete, asphalt and mortar, which enable the construction and maintenance of homes, roads and key national infrastructure that are an essential part of our everyday lives.

As a large landholder, we are committed to managing the balance between industry, the natural environment and the communities we serve. We ensure that the land we own and develop is managed responsibly, sustainably restored and maintained for the benefit of local people, biodiversity and the communities in which we operate.

Leicestershire - and Mountsorrel in particular - has a historic quarrying tradition stretching back over 250 years, and we play a key role in the supply of construction materials in Leicestershire.

What we do at Mountsorrel Quarry



The Hub at Mountsorrel Quarry

Mountsorrel Quarry

Mountsorrel Quarry is the largest hard rock quarry in Leicestershire, and its pink granite is used in nationally significant and often world-famous infrastructure projects.

The site covers an area of around 500 acres – that’s about 250 football pitches. The quarry void (that’s the hole in the ground) reaches a depth of 177 metres below sea level – that’s as deep as the BT Tower in London is tall!

The quarry is more than just the hole itself. It also includes processing equipment (to break and sort the rock into various sizes), mineral storage facilities, two asphalt plants and a concrete batching plant.

It also includes our railhead. We are proud that Mountsorrel Quarry is the largest rail-linked quarry in the region, with up to eight trains a day leaving the quarry - removing 550 HGVs a day.

Did you know?

Sir David Attenborough is a fan of Mountsorrel granite. He once said that studying this rock helped him win a scholarship to Cambridge University! He even kept his own collection of Mountsorrel granite and later donated it to the University of Leicester’s geology department.

Midlands Control Centre

Our operations here are more than just a quarry – they are our Midlands’ control centre, with 332 people currently employed at Mountsorrel Quarry, Quorn House and the Hub.

Quorn House:

This is the national office for Tarmac’s Land and Natural Resources function, which is responsible for looking after Tarmac’s landholdings, with 43 team members based at this office. The office is also used as a meeting and training facility.

The Hub:

We have about 125 team members based at the Hub. This is the operational nerve centre for our Midlands region, supporting Mountsorrel Quarry and others in the area. From co-ordinating logistics to managing delivery schedules, the Hub plays a vital role in enabling our operational sites across the region to deliver construction materials when and where they are needed.

Operational update



Mountsorrel Quarry

Our operations at Mountsorrel Quarry are focused on safely and efficiently extracting pink granite while minimising the impacts we have on the environment and those living and working nearby.

Where we are working

Right now, extraction is taking place in the upper eastern part of the quarry, between 17 and 62 metres above sea level (the consented extraction area reaches a depth of 177 metres below sea level). We are currently working in two directions - towards the east and south simultaneously.

Machinery on site

Our operations require specialist equipment to excavate and move the granite. For this, we are currently using:

- A CAT 6030 - a 300-tonne face shovel (roughly the weight of 50 African elephants)
- A Komatsu WA800 - a 100-tonne loading shovel (taller than a double-decker bus)
- A Komatsu PC1250 - a 120-tonne excavator (as heavy as a fully-loaded London Underground train)

Once extracted, the stone is loaded onto six 100-tonne dump trucks, which transport the material to the primary crusher for processing.

Minimising our impact

We take care to reduce the environmental impact of our work. As such, we adopt a range of measures, including:

- The use of both fixed and mobile dust suppression systems, including haul road sprays
- Applying a fine mist to the stone during the production process to reduce airborne dust (known as polymer dosing)
- The use of controlled blasts, which are carefully designed to comply with approved limits on vibration
- The installation of dust extraction systems on fixed plants to remove airborne dust particles

Our feathered friends

The quarry is also home to a surprising range of birdlife.

- Sand Martins have returned to nest in a purpose-built area beside our stock ground (more on them later)
- Peregrine falcons are once again nesting in the quarry face. This year, they've had four chicks!

Did you know?

Quarry machinery tyres can be over 2 metres tall!

Driving more sustainable operations



New Primary crusher



New screenhouse

The scale of our operations at Mountsorrel Quarry mean we can drive innovation as we strive to improve efficiency and environmental sustainability. We have invested millions of pounds in the latest technology, with investments in recent years including:

A new **primary crusher** (which breaks up the granite):

- Powered by electricity from 100% renewable sources
- Crushes the mineral faster, driving efficiency
- Reduces the level of noise and dust, with improved dust suppression systems

A new **screenhouse** (where the granite is processed and graded):

- Completely encloses our mineral screening operations, reducing noise and dust
- Includes a new internal dust suppression system
- Additional cladding more effectively seals the building
- We have also re-trained our team on site, as the equipment is more technologically advanced

Asphalt on the roads

The asphalt from Mountsorrel has been used in roads locally and in high-profile infrastructure projects across the region, including: The M1 Junction 19 flyover; the M6 Toll Road; M1 Junctions 22-23; the Dronfield Bypass; and the East Midlands Gateway.

Case study: Innovation in asphalt production

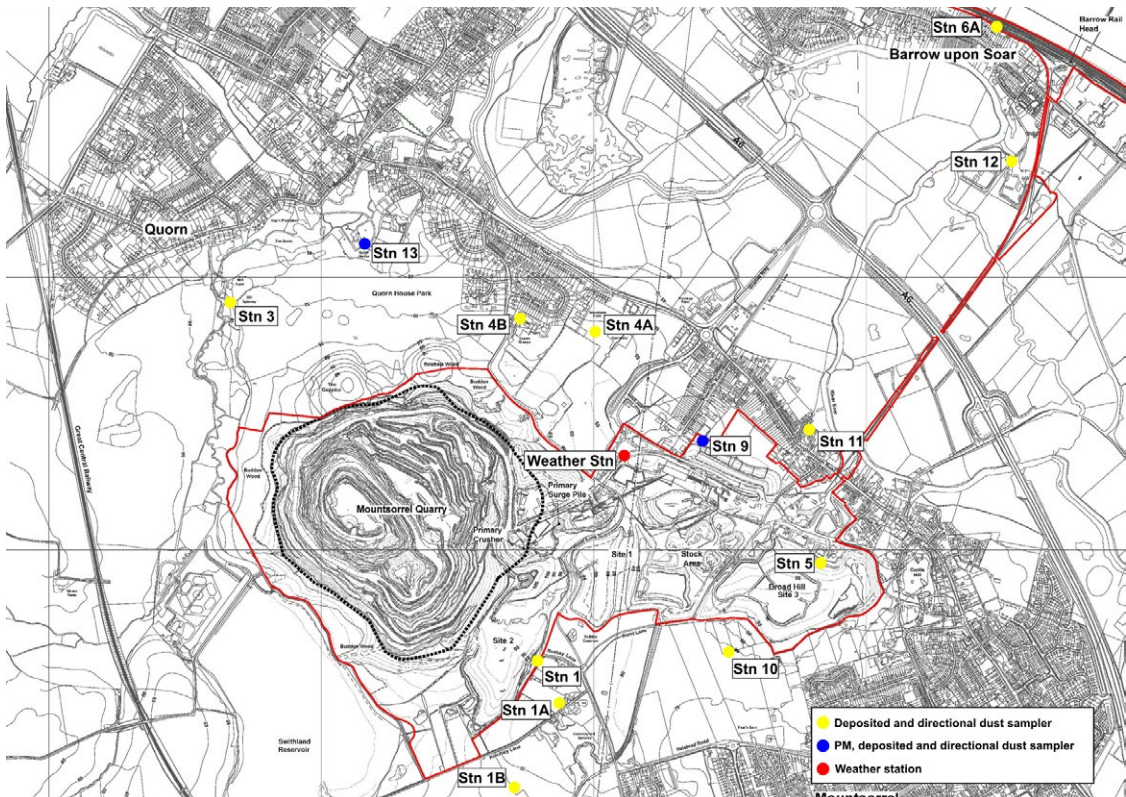
At Mountsorrel Quarry, we have two asphalt plants. One is a continuous drum mix plant that produces asphalt without stopping. The other is a batch plant that produces more specialised asphalt in smaller batches. Asphalt is fundamental to Britain's highway network, as it is used to construct and maintain roads, airports and other infrastructure projects.

We now produce what is known as warm mix asphalt at Mountsorrel. This means that we use innovative new methods to produce asphalt at temperatures 20-40% lower than standard asphalt requires. This significantly reduces CO₂ emissions while maintaining the high quality of our asphalt products.

Our asphalt plants have been upgraded to use more Reclaimed Asphalt Pavement (RAP) – recycled material from road maintenance. Our continuous drum mix plant is currently using up to 45% RAP, helping reduce the demand for new material.

We are also using technologies such as data capture and machine learning to increase visibility of our manufacturing processes. These help us to ensure we are using the most energy-efficient production methods.

Air quality and dust monitoring



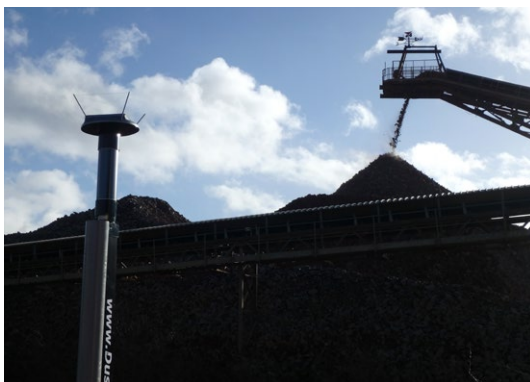
Monitoring locations at Mountsorrel

Mountsorrel is one of the most closely monitored quarries in the UK. We have 22 air quality and dust monitors in place across the site and surrounding area, including:

- 2 PM 2.5/PM10 real-time Osiris monitors
- 13 frisbee gauges (measuring both depositional and directional dust)
- 4 supplementary depositional dust monitors (measuring the total amount of dust mass and soiling over time)
- 3 supplementary directional dust monitors (measuring where dust is coming from as well as how much is being deposited)

This monitoring forms part of our Dust Management and Monitoring Plan (DMMP), which has been agreed with Leicestershire County Council, Charnwood Borough Council and the Environment Agency.

We know that dust has been a concern for some residents in recent years, which is why we've taken steps to go even further with our controls and monitoring – and it's making a difference.



DS100-D combination directional dust flux and depositional gauge



Osiris monitor and frisbee gauge

In September 2024, the Air Quality Management Area around Mountsorrel was officially lifted after several years of pollution levels remaining safely within legal limits.

We also publish our dust monitoring data online so people can see the results for themselves. This is updated on a quarterly basis and is available at: <https://mountsorrel.tarmac.com/environment>

If you want more information on air quality and monitoring, please take one of our handouts from the tables.

Projects we support



Major projects

Mountsorrel Quarry plays a nationally significant role in the supply of construction materials. Leicestershire produces approximately 65% of the igneous crushed rock in England – and Mountsorrel Quarry alone produces nearly a quarter of England’s supply.

The quarry produces high-quality granite based materials, which are used in construction projects across the county. These include aggregates, rail ballast, asphalt and concrete.

Due to the unique physical properties of granite, these materials are critical for a wide range of construction and infrastructure uses, from a local to a national level.

Local

At the local level, we supply local authorities, commercial and industrial developments, and private construction projects. Examples include: Garendon Park; Broadnook Garden Village; Loughborough College; Leicestershire County Council Highways capital works; M69 resurfacing; and construction materials to support Charnwood Borough Council to deliver approximately 19,500 new homes as part of their Local Plan.

Regional

We supply materials to major infrastructure projects across the Midlands, including highways and maintenance schemes such as National Highways Network Areas 7 and 9, M1 Junctions 19 and 22-23, East Midlands Airport and Loughborough Railway Station.

National

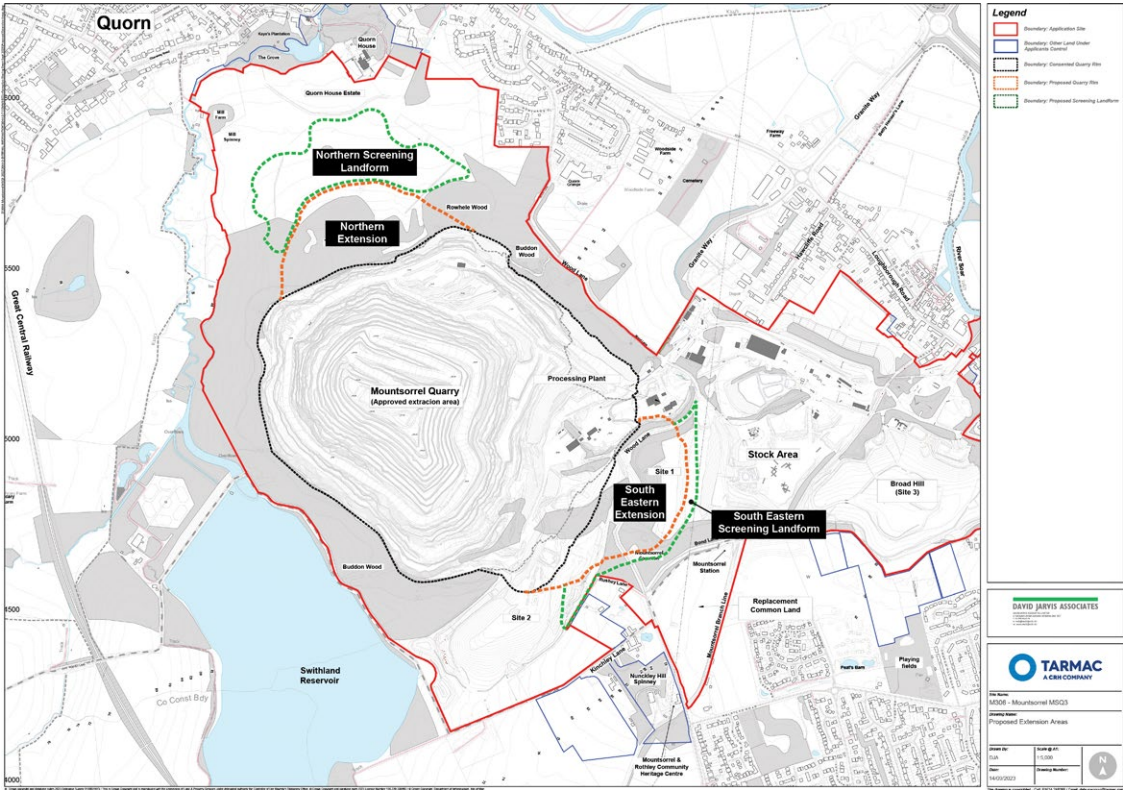
Mountsorrel Quarry supports key national infrastructure and development projects. These have included Wembley Stadium, HS2, the Shard and the Silverstone racetrack. We are due to supply the mineral for two upcoming major projects: the new Lower Thames Crossing and Sizewell C Nuclear Plant.

We also have a partnership with National Highways, supplying road maintenance and construction materials for road programmes across the country. Our partnership with Network Rail means we supply 40% of the rail ballast for the UK’s rail network as well as supplying intermodal distribution centres such as the East Midlands Gateway.

Did you know?

The granite at Mountsorrel Quarry formed 450 million years ago deep inside the Earth. Mountsorrel’s granite is made up of a combination of minerals, including feldspar, biotite and quartz. It also has a high proportion of large pink crystals, which gives it that rare pink colour.

Overview of the planning application



Final proposals

The proposed northern and southeastern extensions would increase the working life of the quarry by 18 years, securing the supply of its nationally significant pink granite up to 2058.

Northern extension

The proposed northern extension is located in Quorn House Park, to the south of the village of Quorn, Chaveney Road and Meeting Street, and to the west of Wood Lane.

We are proposing to create a natural-looking landform in the northern extension, with woodland planting to screen the proposed extension area from Quorn village and provide a suitable setting for Quorn House and its gardens. This landform would become a permanent feature of Quorn House Park, blending into the local landscape and delivering woodland and public access. The extension would also include a visitor car park to the southeast of the park, permissive footpaths allowing for greater public access across the parkland, and information boards on points of historic interest.

Southeastern extension

The proposed southeastern extension is located to the north of Kinchley Lane, Rushey Lane and Bond Lane, and west of the village of Mountsorrel.

To facilitate the proposed southeastern extension, we would need to permanently divert a section of Wood Lane. The new route would go around the margins of the proposed quarry extension area. The replacement road would be 6 metres in width and would have a new 1.6 metre-wide footpath that would connect with the existing Public Right of Way.

We would also need to replace Mountsorrel Common with an area of high-quality common land. We are proposing this replacement common to be adjacent to the existing Mountsorrel Common on Bond Lane. It would offer additional woodland, grassland habitats, a community orchard and a car parking area, all linked by pathways. We will be bringing forward a common land application in due course, which will give us an opportunity to ensure that our proposed replacement land best meets the needs of the community.

If you would like to see our plans in more detail, please see the detailed maps on our table.

Overview of the proposed restoration



Final restoration scheme

We are committed to managing our operations at Mountsorrel Quarry in a way that supports the diverse wildlife that calls the site home, whilst also being a good neighbour to those living and working nearby.

As part of this commitment, we aim to deliver high-quality restoration that benefits both the environment and the local community. Over time, the quarry will naturally fill with water, creating the potential for a future water resource and amenity uses.

Northern extension

The upper part of the quarry would remain above water level and could provide opportunities for nature conservation in the long term.

At Quorn House Park, we would provide new wildlife habitats, including grassland, woodland and wetland. The creation of new paths would provide public access.

Southeastern extension

To facilitate the southeastern extension, we would need to permanently divert a section of Wood Lane. The existing section of Wood Lane would remain open until the new section of highway is ready to be connected, with only a minimal period of road closures.

The replacement for Mountsorrel Common would feature enhanced planting, replacement woodland and grassland habitats, with acid/heath/scrub margins and mown paths. If you would like to see our restoration plans in more detail, see the detailed maps on our table.

Restoration today



Sand Martin nests

Through the progressive restoration of the quarry, we have successfully restored 60 hectares of land, turning them into diverse ecosystems that support a range of species, from endangered birds to butterflies, and allowing them to flourish.

We have now completed the restoration of an area southwest of the quarry off Kinchley Lane known as Site 2. We will be opening permissive footpaths across the site and are working with Charnwood Geopark to create a viewing area with information boards, so it becomes a place where local people can learn and enjoy themselves.

UNESCO Global Geopark bid

Mountsorrel Quarry is within an area which is known as Charnwood Forest, known for its geological and cultural heritage. Charnwood Forest Geopark is an initiative to attain UNESCO Global Geopark status for the area. We are working with the Geopark and look forward to supporting them in their bid.

The Conservation Volunteers

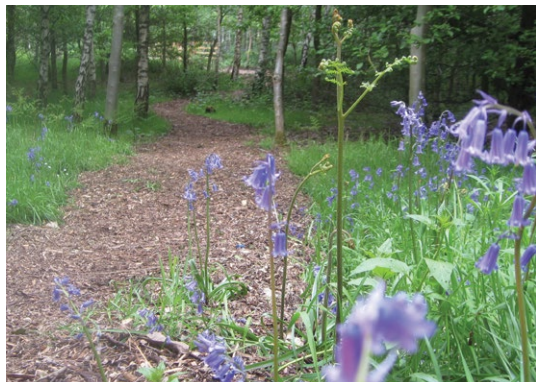
We have a five-year partnership with The Conservation Volunteers (TCV) - one of the UK's leading environmental volunteering charities.

Our partnership began in 2024 and, since then, volunteers have taken part in 24 days of practical conservation work at the quarry, including removing old tree guards and creating habitats for local wildlife. In 2025, 14 days of volunteer activity have taken place across areas such as Broad Hill and Kinchley Lane.

Tarmac has 40 conservation collaborations nationwide, and we will continue to work with local communities and conservation partners to improve biodiversity, restore land and support a greener future for generations to come.

Home "tweet" home - our Sand Martins

Sand Martins are usually found in sandy river banks, cliffs and gravel pits, but they have decided to call our stockpiles of granite dust home. While they are visiting, we restructure some stockpiles to create the steep, sandy slopes they are so fond of. We also adapt our operations to avoid any disturbance during nesting season. We love having the birds to stay and look forward to their visits each year.



Status of the planning application

We submitted our planning application to extend Mountsorrel Quarry in October 2023. Leicestershire County Council then consulted on the application with a wide range of consultees, including members of the public.

Having considered the responses it received to the application, in May last year, the County Council formally requested additional environmental information as part of the Environmental Statement to support our planning application. This is known as a Regulation 25 request, with the additional information or clarification requested ranging from undertaking and updating supporting studies to providing further explanations on specific matters within the original submission. This is a standard part of the planning process, particularly on large and complex applications, which can take extended periods of time to consider.

We have been working hard over the past 12 months, liaising with the County Council and others, and will shortly be submitting our response to the Regulation 25 request. This includes additional environmental information on:

- **Ecology:** including clarification of proposed mitigation and compensation alongside updated species surveys for badgers, bat roosts, schedule 1 birds, saproxylic invertebrates, the Dingy Skipper (butterfly) and fungi
- **Water Management:** including further details of existing surface water management features

- **Landscape and Visual Impacts:** including the design of the proposed northern landform
- **Noise:** including night-time, tonal, impulsive and intermittent noise, short-term activities and an updated Noise Management and Mitigation Plan
- **Dust and Air Quality:** an updated Dust Management and Mitigation Plan
- **Public Rights of Way:** including existing and proposed permissive footpaths
- **Archaeology and Cultural Heritage:** including impacts on the Moated Lodge, Quorn House and the Mountsorrel conservation area as well as further archaeological assessment of the replacement common land, the former deer park and Quorn Park

In addition, whilst outside the scope of a Regulation 25, clarification was also requested on the proposed diversion of Wood Lane, including a Stage 1 Road Safety Audit and design responses for the proposed highway. Cross-sectional drawings of both the northern landform and the access from the quarry into the grounds of Quorn House were also requested.

What happens next?

Leicestershire County Council will carry out formal consultation on the additional information submitted in support of the planning application. This means residents and other stakeholders will have an opportunity to provide their comments to the Council. The submitted documents will be made available on the County Council's website.

Working at Tarmac



The team at Mountsorrel Quarry

Lots of local people work at Mountsorrel Quarry, and there are a surprising number of diverse jobs on offer. These include:

- Engineers
- Geologists
- Environmentalists
- Strategic planners
- Customer account managers
- Production managers
- Machine drivers
- Explosive experts

To see the jobs that we have available at Mountsorrel and across Tarmac visit <https://jobsearch.tarmac.com>.

Apprenticeships

We are helping to nurture the next generation of talent for our sector, with 323 apprentices currently working at Tarmac. Five of these are based at our operations at Mountsorrel Quarry.

Our apprenticeships cater for different skills and interests:

- Indoors: often called 'corporate functions', these roles support the business behind the scenes, such as finance, IT, marketing, HR and procurement
- Outdoors: operational roles in engineering and quarry management, HGV drivers and machine operators
- Hybrid: a mix of both office and site-based roles in areas like commercial, technical, and project management

We welcome anyone looking to gain industry-recognised qualifications or change careers. Find out more at <https://tarmaccareers.com/early-careers/apprentices-and-higher-apprentices>



Meet Mustafa!

Mustafa Malek is an Operations Management Apprentice and one of our five apprentices based at Mountsorrel Quarry. Born and raised in Leicestershire, he's been on our apprentice programme for the past two years. A typical day for Mustafa involves team briefings, production planning and solving operational challenges. He balances this hands-on experience with university coursework, as part of his degree apprenticeship. Mustafa has gained a deep appreciation of the complexities of operations management, especially the collaboration needed across different departments.

Tarmac in the community



From top left: Mountsorrel Beacon, St Peter's Church, Axels Acres Pony Rescue, Loughborough Sea Cadets, Rectory Wildlife Garden

We are always looking for local groups and projects to support. There are two ways in which people can apply to us for funding:

Directly through the quarry. Since 2023, we have donated more than £54,000 to local projects and groups, an average of about £22,000 per year.

Through the Tarmac Landfill Community Fund, which enables landfill operators to donate part of their annual tax liability to a variety of approved community and environmental projects. Over the past 10 years, we have donated over £650,000 to local projects around the quarry. Recent funding has included:

- Continuing to provide Mountsorrel Juniors FC with kit support
- Providing material to Rothley Ivanhoe Tennis Club to repair potholes in their car park
- Providing financial support to The Fix It Group 23 to buy new tools and equipment

Got funding ideas? Get in touch!

You can apply for support by emailing the quarry at mountsorrelquarryfeedback@tarmac.com or by visiting www.entrust.org.uk to learn more.



Local primary school children have been invited to take part in a competition aimed at inspiring their creativity while helping them discover the rich geological heritage of their local area. The Rock Stars Competition encourages children to explore the story of our world-famous pink granite through drawings, poems, songs, sculptures or short stories. Visit <https://mountsorrel.tarmac.com/rock-stars>



Keep in touch



Thank you for taking the time to visit our drop-in session. We hope the boards have provided some helpful information and you've had a chance to speak to members of the team.

We'll continue to keep the community informed about the work we do through our Quarry Liaison Group (see box below) and on our project website (see details below).

Any comments or suggestions?



- Complete a comment card today or online at: <https://mountsorrel.tarmac.com>
- Email us at: mountsorrelquarryfeedback@tarmac.com
- Speak to a member of our team here today

Want to join our mailing lists?




- General mailing list: this is how we will be sharing updates about quarry activities. If you are interested in being added, please register your email address at the reception desk.
- Blasting notification mailing list: this is how we share information about our blasting activity. If you are interested in being added, please email mountsorrelquarryfeedback@tarmac.com or register your email address at the reception desk.

Keep in touch

For enquiries about the planning application:

-  che@eqcommunications.co.uk
-  020 3617 6359

For enquiries about quarry operations:

-  mountsorrelquarryfeedback@tarmac.com
-  07483 920301
-  <https://mountsorrel.tarmac.com>

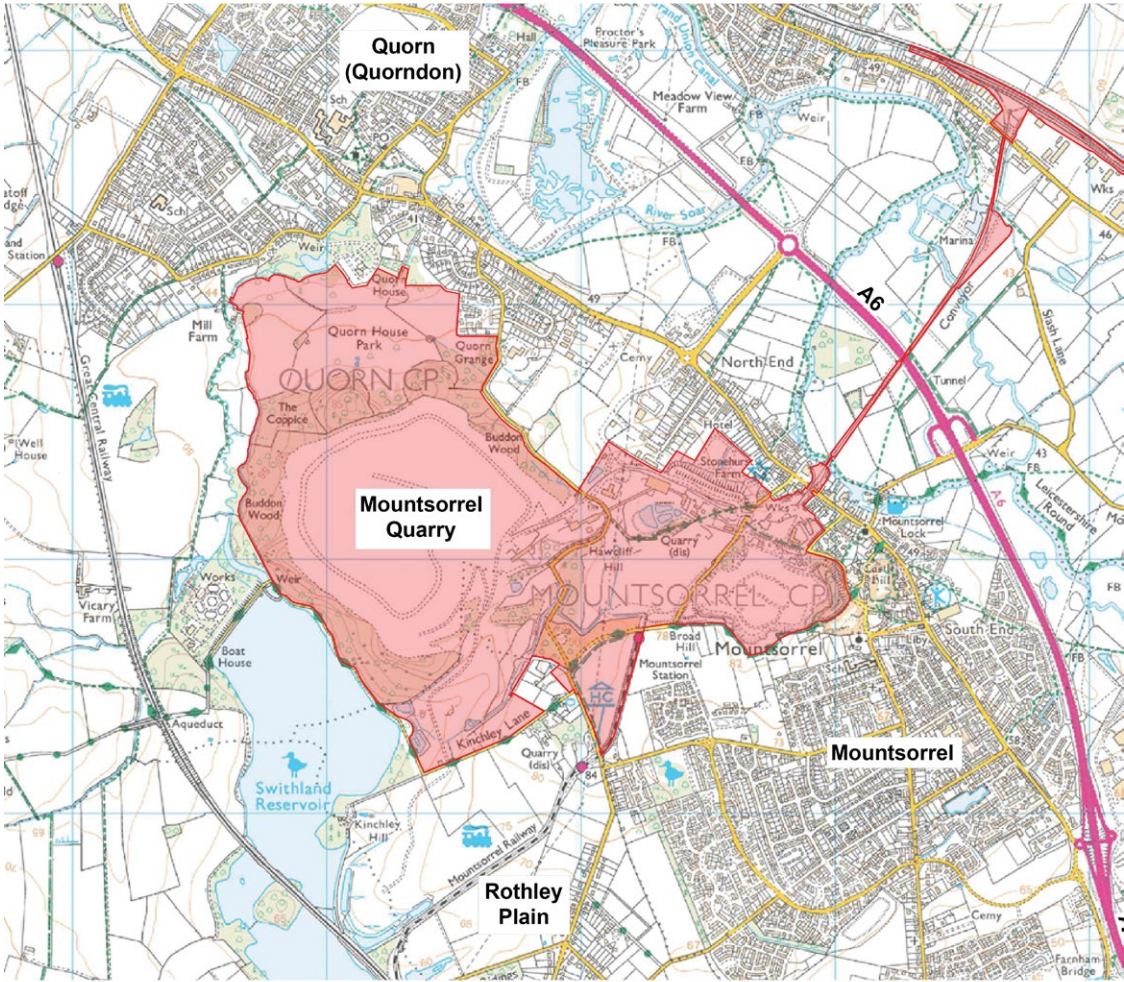


mountsorrel.tarmac.com

Our quarry liaison group

The Mountsorrel Quarry Liaison Committee acts as a forum for discussion between Tarmac, Leicestershire County Council and representatives of the local community, such as parish councils, on all matters relating to Mountsorrel Quarry, including operations, planning and environmental monitoring. The Committee meets on a quarterly basis.

Mountsorrel Quarry location

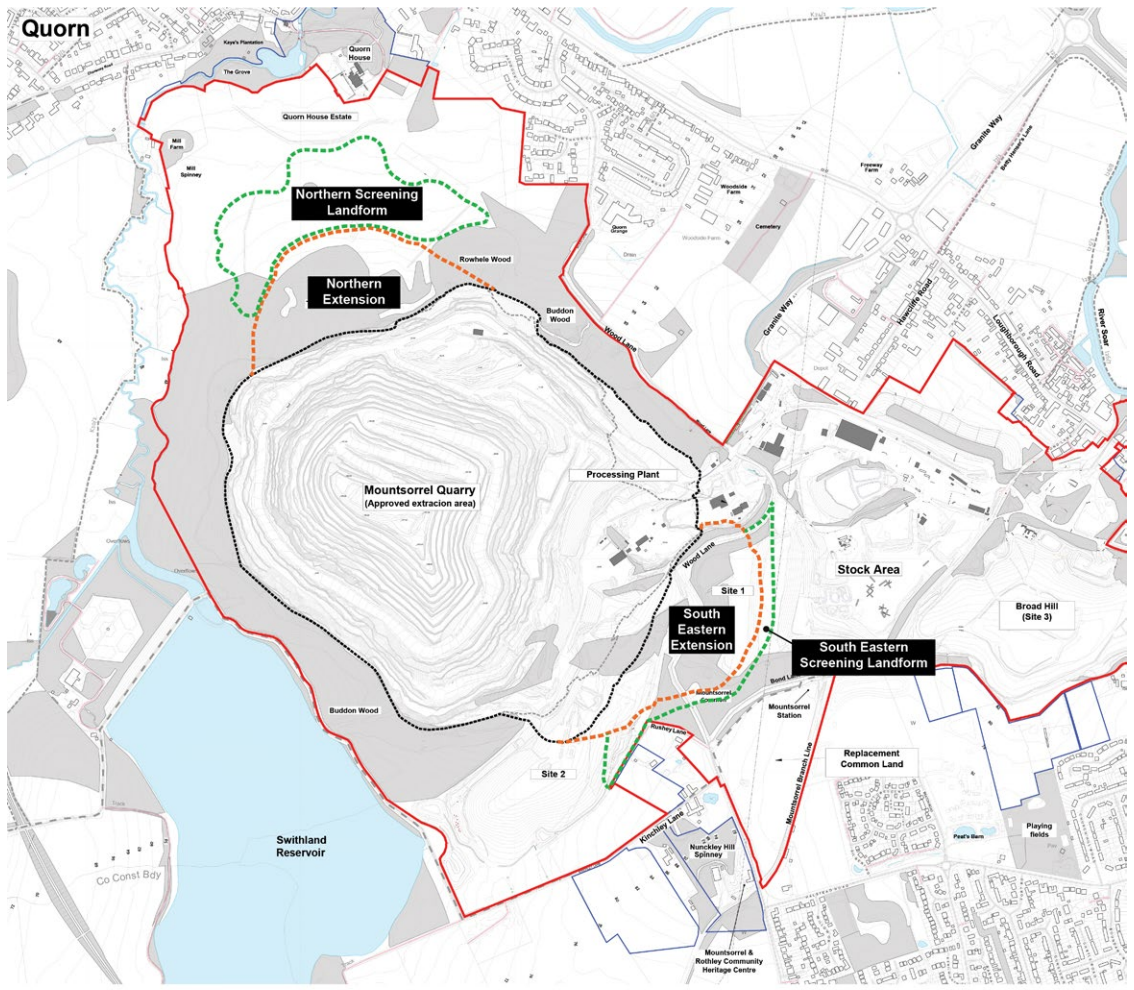


Legend
Boundary: Application Site

Aerial shot of Mountsorrel Quarry



Submitted planning application



- Legend**
- Boundary: Application Site
 - Boundary: Stone Land Under Applicant's Control
 - Boundary: Consented Quarry Rim
 - Boundary: Proposed Quarry Rim
 - Boundary: Proposed Screening Landform