

# TECHNICAL INFORMATION

## DC GROUT RANGE

(Sulphate Resisting Grouts to class DC4)

### Product Data Sheet

#### DESCRIPTION

**Pozament DC Grouts** are range of pre-blended multi-purpose cementitious grouts manufactured using ordinary Portland Cement and selected fine fillers. They meet the requirements set out in **BS 8500-1** to achieve a sulphate resistance class of DC4. The **DC Grout Range** has excellent pumpable qualities when mixed with water at 40% addition, have low heat of hydration and minimal in-situ shrinkage.

#### USES

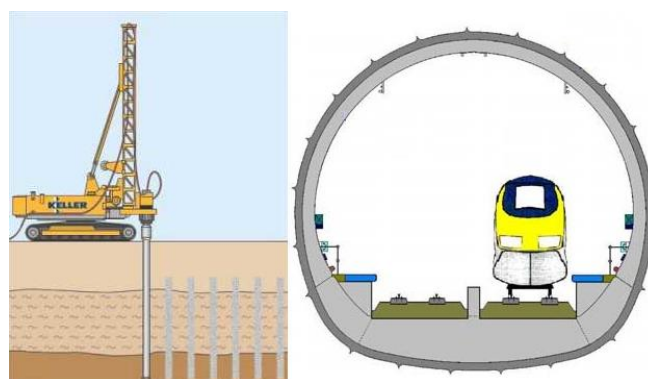
**Pozament DC Grouts** are a versatile grout range designed for annulus grouting, void filling, piling and ground remediation, amongst other general grouting operations, where a high sulphate resistance is required.

**Pozament DC Grouts** are available with Flow modified, Set accelerated, Expansive, and Anti-Washout modifications to suit the grouting requirements

Typical uses include filling redundant mine and tunnel workings, ground stabilisation, pile installation and trenchless tunnel systems.

#### SPECIAL PROPERTIES

- High resistance to sulphates
- Excellent pumpability
- Low heat of hydration
- Low density
- High yield
- Available in a range of strength grades and packaging solutions
- Available with flow, expansive, Anti-washout, and accelerated modifications to suit the grouting needs.



#### PERFORMANCE DATA

	Compressive Strength	Flexural Strength
1 day	10 N/mm <sup>2</sup>	2.5 N/mm <sup>2</sup>
7 days	30 N/mm <sup>2</sup>	5 N/mm <sup>2</sup>
28 days	45 N/mm <sup>2</sup>	7 N/mm <sup>2</sup>

Modulus of Elasticity @28 days	14.5 GPa
Final setting time (Standard set)	6 hours

*Data is sourced from tests performed in controlled laboratory conditions at 18-20°C.*

Yield per 20kg	
Kg powder per m <sup>3</sup>	1088 kg
20kg bags per m <sup>3</sup>	44 Bags
Litres per 20kg bag	14 Litres
Water content	40%
Water content per 20kg bag	10 Litres

#### APPLICATION INSTRUCTIONS

**Pozament DC Grouts** should be mixed using cool clean water. The grouts are designed to be versatile and can be mixed and placed using a range of equipment including paddle, high-shear and colloidal mixers then placed using helical screw, diaphragm and piston type pumps.

For more details contact:  
 03444 630 046 [specialistproducts@tarmacbp.co.uk](mailto:specialistproducts@tarmacbp.co.uk)

**TARMAC.COM**

The information supplied in our literature or given by our employees is based upon extensive knowledge and experience. This information, together with that supplied by our agents or distributors, is given in good faith in order to help you. Our Company policy is one of continuous Research and Development; we therefore reserve the right to update this information at any time without prior notice. We also guarantee the consistent high quality of our products; however, as we have no control over site conditions or the execution of the work, we accept no liability for any loss or damage which may arise as a result thereof. Country specific recommendations, depending on local standards, codes of practice, building regulations or industry guidelines, may affect specific installation recommendations. Any existing intellectual property right must be observed. Tarmac's standard terms and conditions apply.

## PACKAGING AND STORAGE

**Pozament DC Grouts** are available in nominal 20kg sacks, palletised and shrink wrapped. The **DC Grout Range** is also available in bulk bags and bulk tankers. Palletised **DC Grout** should be stored in cool dry areas clear of the ground, sheeted or under cover and stacked not more than two pallets high.

The product should be used on a first in – first out basis. Shelf life is 6 months subject to temperature and humidity.

Individual bags of **DC Grout** should be stored in sealed original packaging in a dry location at temperatures between 5°C and 30°C.

## QUALITY CONTROL

All Tarmac products are factory blended, tested and packaged to quality control procedures in accordance with BS EN ISO 9001.

## CLEAN UP AND SPILLAGES

Dry powders should be swept up and disposed of in accordance with the Local Authority.

## INFORMATION, PRICES & ORDERING

For technical information, pricing and to place orders contact our Sales Office on the following:

Telephone: **03444 630 046**

Email: **specialistproducts@tarmacbp.co.uk**

Visit our website: **www.tarmac.com**

Tarmac Building Products Ltd.,  
Swains Park Industrial Estate, Park Road, Overseal,  
Swadlincote, Derbyshire, DE12 6JT

## HEALTH & SAFETY

Health and safety advice, which must be followed, can be found on the Material Safety Data Sheet. Users are advised to wear face mask, goggles, gloves and overalls when handling, mixing and applying cementitious products.

Contains Portland Cement Contains Chromium (VI), which may produce an allergic reaction. Clothing contaminated by wet cement should be removed immediately and washed before reuse. R38 - Irritating to skin. R41 - Risk to serious damage to eyes. S26 - In case of contact with eyes, rinse immediately with water and seek medical advice. S37/39 - Wear suitable gloves and eye/face protection. S2 - Keep out of reach of children.

For more details contact:

**03444 630 046 specialistproducts@tarmacbp.co.uk**

**TARMAC.COM**

The information supplied in our literature or given by our employees is based upon extensive knowledge and experience. This information, together with that supplied by our agents or distributors, is given in good faith in order to help you. Our Company policy is one of continuous Research and Development; we therefore reserve the right to update this information at any time without prior notice. We also guarantee the consistent high quality of our products; however, as we have no control over site conditions or the execution of the work, we accept no liability for any loss or damage which may arise as a result thereof. Country specific recommendations, depending on local standards, codes of practice, building regulations or industry guidelines, may affect specific installation recommendations. Any existing intellectual property right must be observed. Tarmac's standard terms and conditions apply.