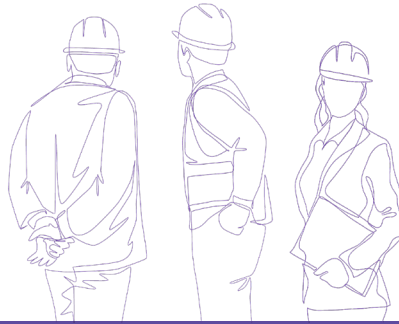


People



“We are delighted to continue to develop our work with Tarmac at Panshanger Park. The park boasts some wonderful wildlife, and we are looking forward to showing visitors all the park has to offer and bringing new opportunities for people to take action for wildlife through volunteering.”

Lesley Davies, the Middlesex Wildlife Trust's Chief Executive



Communities

Building stronger community relationships in 2021

Our team in Aberthaw donated over 70 bags of Blue Circle cement to help Barry-based Amelia Trust Farm make site improvements, ready for its return to normal opening following COVID-19 restrictions in Wales being lifted. Colleagues from Aberthaw have a long-standing partnership with the farm which helps disadvantaged young people gain skills, confidence and experience to help them move forward at a critical time in their lives.

Neil Hardy, Site Manager at the Farm said: “The ongoing support from Aberthaw has been vital these last few years. The latest donation couldn’t have come at a better time - there was a lot of work to be done using cement around site!”

We extended our volunteering partnership between Tarmac and the Peak District National Park Authority by another five years in 2021. The partnership was first formed in 2016, and the initiative has seen employees from our Tunstead site contribute thousands of volunteering hours within the Peak District National Park. Work has included footpath repairs, replacing a bridge on the Pennine Way, drystone walling and the management of ancient hay meadows. Tarmac’s support also includes the ongoing funding of an engagement conservation volunteers assistant role, which involves coordinating volunteering activities throughout the park.



Pete Butterworth, Stone and Powders Director at Tarmac’s Tunstead site, said: “We’re delighted to be able to continue our partnership with the Peak District National Park Authority. The benefits of outdoor activity for physical and mental wellbeing have never been more in focus, following a year in which we have all had our lives restricted by the pandemic.”

As part of our ongoing partnership, Tarmac, Herts and Middlesex Wildlife Trust have introduced a new five-year community engagement and volunteering programme which will open the historic landscape of Panshanger Park to the wider public. We have helped to fund the new Park People and Wildlife Officer role to develop a new programme of volunteering activities including conservation, monitoring, and interpretation across the park and support visitors in discovering more about the park’s wildlife and habitats.