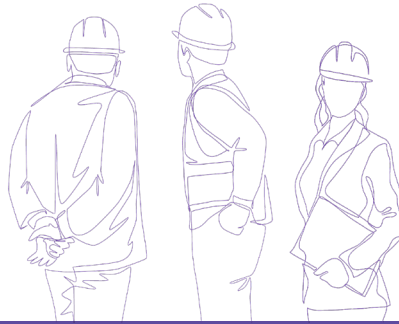


People



“This was a truly great event and a brilliant opportunity for us to showcase our business and how we operate the quarry in a sustainable way. We put a great deal of effort into planning and delivering the day, so to see the interaction between our presenters and the children was really rewarding. We hope we can build on these foundations and support the STEM Festival in future.”

Dan Carr, Barrasford Quarry Manager



Communities

Education and Employment 2021

Nearly 80 pupils from Bellingham Middle School and Dr Thomlinson Middle School attended an action-packed STEM (science, technology, engineering and mathematics) event at Barrasford Quarry in October 2021. The year eight students were involved in four sessions including careers, geology, tech and land management, with the day coming to a close with a planned blast. The session explored the different roles at the quarry, and activities that helped to tackle gender stereotypes in the industry, how the machinery worked and the science and history of the area.

Mountsorrel Quarry helped Ashmount School in Loughborough realise its dream of creating a new sensory garden – by making a significant donation of materials towards the project. Ashmount is a school for pupils between the ages of four and 19 with a range of special educational needs.

The new garden in the school grounds, will allow the children to enjoy a wide variety of sensory experiences. Sensory gardens help to stimulate and engage the five basic senses of sight, smell, sound, touch and taste, allowing visitors to connect with nature and become more aware of their surroundings. Research shows that spending time in a sensory garden can help enhance wellbeing, reduce stress and calm the mind.



Jason Lewis at Ashmount School said: “We contacted Tarmac to ask for their help with our new sensory garden project. The team turned up at the school with lots of wooden poles, sleepers and sheeting. After unloading the wood, we showed them around and they were genuinely interested in the school and our amazing students. With what Tarmac has done for us we will be able to build an amazing sensory garden, which will last for many years to come. From all the students and staff at Ashmount School, thank you Tarmac.”