

# Solutions



**“This is the first time that Toptint Glow has been used on a major commercial development and we were delighted to be able to propose a solution that not only has high aesthetic and environmental quality but also helped to improve safety and visibility.”**

Glanville Norman, Product Development Manager at Tarmac

## Sustainable Construction

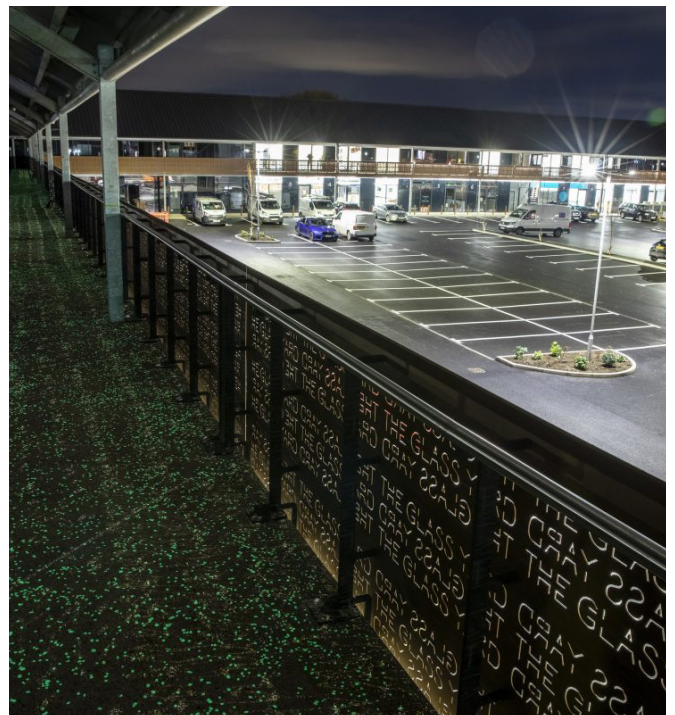
### Innovative luminescent concrete in Glass Yard Development

Toptint Glow is an innovative glow in the dark paving system that absorbs ultraviolet rays during the day and radiates a soft luminescent light at night has been used to bring a new commercial development in Derbyshire to life.

Tarmac worked with developers Blue Deer Ltd to install its decorative Toptint Glow solution on the main walkways and first-floor balconies around its new Glass Yard development in Chesterfield – a mixed-use scheme that will combine office and retail space including an artisan food hall.

Toptint Glow – using Chryso’s Lumintech technology – is a unique, decorative concrete that uses light-sensitive chippings that glow and help illuminate areas such as footpaths, cycleways and pedestrian areas, as well as being available to use in architectural and landscape design as an alternative to conventional pavements to enhance the night-time built environment.

The system works by incorporating the recycled composite luminescent chippings into a matching coloured concrete mix, providing an end result which picks up and emits light at night after dark as well as delivering a long-lasting and durable surface.



Glanville Norman, Product Development Manager at Tarmac, said: “New developments such as the Glass Yard or other existing high-profile sites often require something visually distinctive that will set them apart, and we’re always looking to develop new and exciting materials that can complement bold design.

Tim Turner, Managing Director of Blue Deer Ltd, said: “One of the key principles of our design at the Glass Yard was to introduce a new kind of working environment that is exciting, safe and sustainable and one that people enjoy travelling to and working within.”