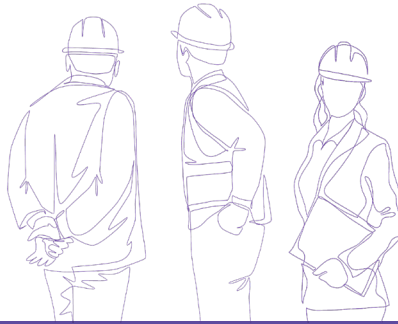


People



“Our Geo-Trail is visited by schools, colleges, universities and general interest groups, as well as by families. Many come to see the spectacular Millennium Wall which showcases different drystone walling styles from throughout the British Isles. The greatly improved accessibility will allow us to welcome many more visitors to the site.”

Peter Jones, National Stone Centre Trustee and Geology Specialist



Communities

National Stone Centre

The Tarmac Landfill Communities Fund donated £8,000 to improve access for wheelchair users and people with pushchairs at the National Stone Centre in the Derbyshire Dales.

More than 500m of pathways have been resurfaced and new signs installed on the kilometre-long Geo-Trail, near Wirksworth, which enables visitors to walk through rock formations that were formed millions of years ago submerged under tropical seas.

Sam Jackson, Tarmac's Powders Plant Manager at nearby Ballidon Quarry, said: “Given a lot of Tarmac's business starts with stone, it is very apt that we have been able to support the National Stone Centre through the Landfill Communities Fund.

“The Geo-Trail is a fascinating trip through the history of geology in the area with the story presented in a very accessible way through leaflets and boards. We are really pleased that this grant will enable even more people to be able to enjoy the trail.”



The trail is self-guided and encompasses extraordinary geology which is internationally recognised as a Site of Special Scientific Interest (SSSI). Visitors can wander through the millennia, imagining warm tropical seas, reefs, lagoons and a wide variety of marine creatures including corals, brachiopods and crinoids which ultimately formed the limestones seen today.