



# Proven performance

**FAST DRYING LIQUID FLOOR SCREED FOR MODERN NEW BUILD HOME**

## The challenge

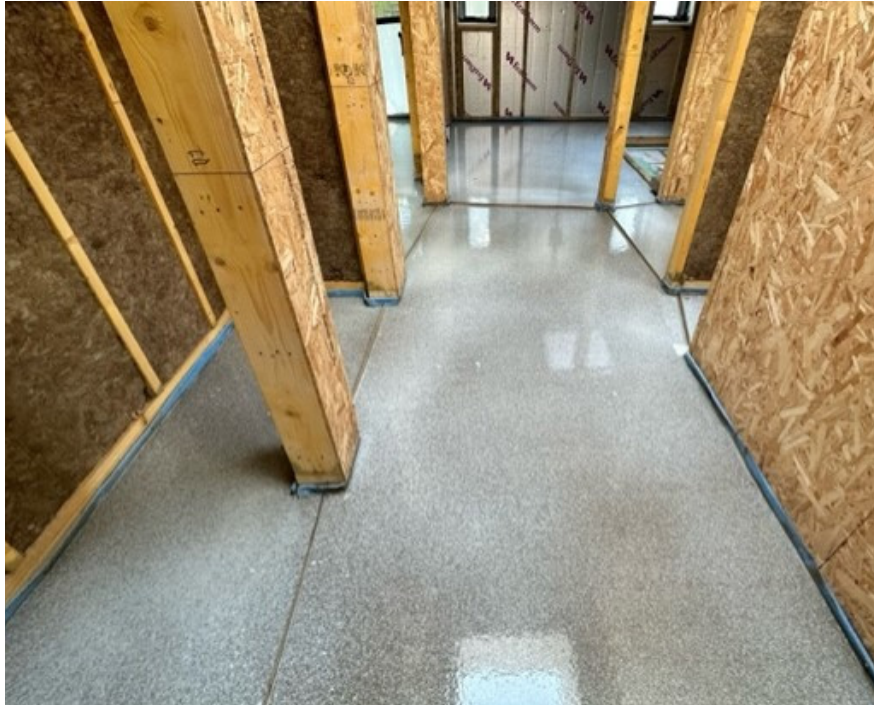
This modern, new build house in Hemingford Grey near Huntingdon required a high-quality floor screed to install quickly over underfloor heating. The screed depth was critical as the three separate areas had to be 25mm below a polished concrete floor to allow for the installation of limestone tiles. With a challenging schedule for completion, the screeding contractor needed a fast-drying floor screed that would allow other trades to continue quickly and help the overall efficiency of the build programme. Site access and storage was limited so having sand and cement or bagged screed stored on site would have been difficult.

## Our solution

After considering the options, TOPFLOW Screed C, Tarmac's free-flowing, cement based liquid screed was chosen as the best option. It can take foot traffic after just 24-48 hours and dries within 21-28 days versus a minimum of 40-75 days when using other traditional or flowing screed products. It can be pumped into place and allows large areas to be covered quickly with up to 120m<sup>2</sup> laid in as little as 45 minutes. The fast-drying times and early trafficking characteristics of TOPFLOW Screed C would enable other trades to follow on quickly, helping to improve continuity and efficiency within the client's build programme. It also requires very little sanding and is compatible with most cement-based adhesives meaning it can be used with a wide range of flooring types.

## Results and benefits

Using Topflow Screed C enabled work to be completed in a fraction of the time required for conventional sand-cement screed. The rapid drying times of the screed allowed the floor coverings to be installed earlier than originally planned, enabling the final fix to be brought forward. As the screed was delivered to site pre-mixed and exactly when required and in the right quantity, the main contractor was able to avoid any issues with material storage or waste. Using a liquid screed also improved the performance of the underfloor heating system by being completely encapsulated by the screed. This would allow rapid heat transfer, fast warm up times and greater heating efficiency and control for the homeowner.



For more details visit: [tarmac.com/topflow](https://tarmac.com/topflow)

**TARMAC.COM**

Building  our world

©2023 Tarmac Trading Limited.  
‘Tarmac’ and the ‘circle logo’ are registered trademarks.